

# NobleSeal® TS

## Thin-Bed Waterproofing

A single sheet membrane that provides thin-bed waterproofing and crack isolation/joint bridging.



- **Suitable for Thin-Bed Shower Waterproofing**
  - Meets ANSI A118.10 - IAPMO File #4339
- **Best Moisture/Vapor Barrier - 0.050 perms**
  - ASTM E 96, Procedure E
- **Protects Thin-Set Tile from Cracking**
  - Rated "Extra Heavy" by Robinson Test (ASTM C 627)
  - Exceeds "High Performance" criteria for ANSI A118.12 (jig test)
- **Single Sheet Membrane**
  - Made from Chlorinated Polyethylene (CPE)
  - Guaranteed not to rot, crack or deteriorate
  - Ensures uniform thickness & quality
  - Minimizes workmanship variables
  - No curing - Install tile immediately
- **Use Over Common Substrates**
  - Including concrete, many plywood subfloors, radiant heat and primed gypsum underlayments

### Installation:\*



1. Apply Bonding agent (NobleBond EXT or latex modified thin-set).



2. Embed NobleSeal TS with a roller.



3. Install tile.

\* CAUTION: Read complete installation instructions prior to installing.



Simple Solutions... Proven Performance

[www.noblecompany.com](http://www.noblecompany.com)



Form #NS TS PD 04/09  
Supersedes TS PD 04/07

# NobleSeal® TS Product Description

## APPLICATIONS

Use in interior applications of ceramic and stone tile, both horizontal and vertical surfaces, over common substrates: Thin-set shower waterproofing, steam rooms, fountains, pools and planters. Also, wet areas in shopping centers, food courts, hotels, condominiums, supermarkets, prisons, health clubs, military and university housing and malls.

## HOW TO SPECIFY

Specify in Division 9 • Where required, provide NobleSeal TS, a composite sheet membrane manufactured from Chlorinated Polyethylene (CPE), with polyester fabric laminated to both sides with a nominal thickness of 0.8mm (.030"). Meets ANSI A118.10 and listed by IAPMO (File #4339). Refer to NobleSeal TS Short Form Spec.

## COMPOSITION & MATERIALS

NobleSeal TS is a composite sheet membrane manufactured from Chlorinated Polyethylene (CPE), a non-plasticized elastomer with polyester fabric laminated to both sides. It can provide both waterproofing and crack isolation of ceramic, dimension stone, agglomerated and terrazzo tile.

## PRODUCT DIMENSIONS

- 5' x 100' (1.5m x 30.5m) roll = 500 sq. ft. (46.45m<sup>2</sup>)
- Nominal thickness is .030" (0.8mm)

**LIMITATIONS:** NobleSeal TS is not designed for use as a wearing surface or exposed roof membrane. NobleSeal TS cannot accommodate deflection greater than industry guidelines for the flooring surface. For any application not specifically detailed in the installation instructions, contact Noble Company.

**NOTE:** NobleSeal TS must be installed in compliance with appropriate ANSI and industry standards and TCNA recommendations. See Installation Instructions for details. Contact Noble Company for other information.

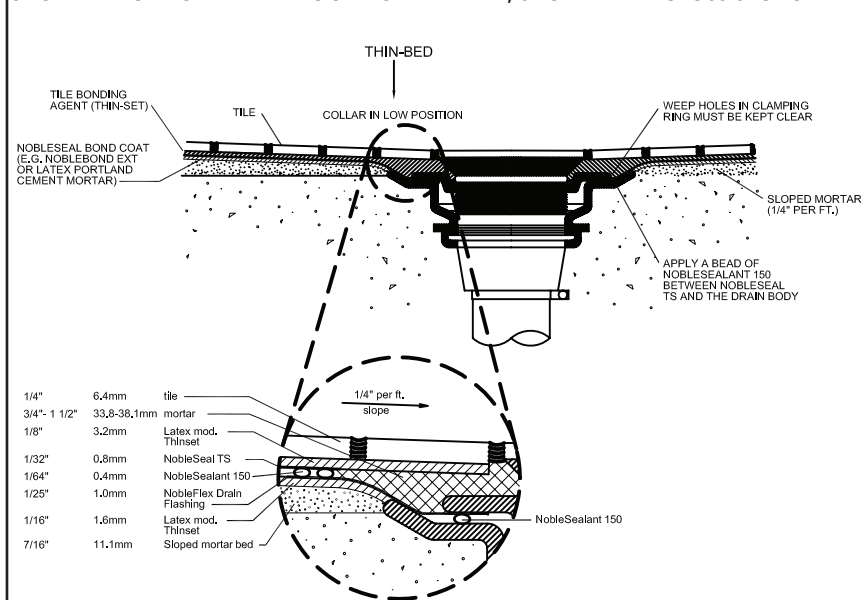
**WARRANTY:** NobleSeal TS brand CPE membrane is guaranteed for the life of the original tile installation by Noble Company against failure caused by rotting, cracking and microorganism deterioration when properly installed in tile systems for which its use is recommended by Noble Company. This warranty is limited to the replacement of defective material and freight charges to destination only. There are no other expressed or implied warranties, and this warranty is in lieu of any other warranty, including, but not limited to, implied warranties of merchantability and fitness for purpose. Noble Company is not responsible for consequential damages. The remedy of the purchaser set forth herein is exclusive.

## TEST DATA

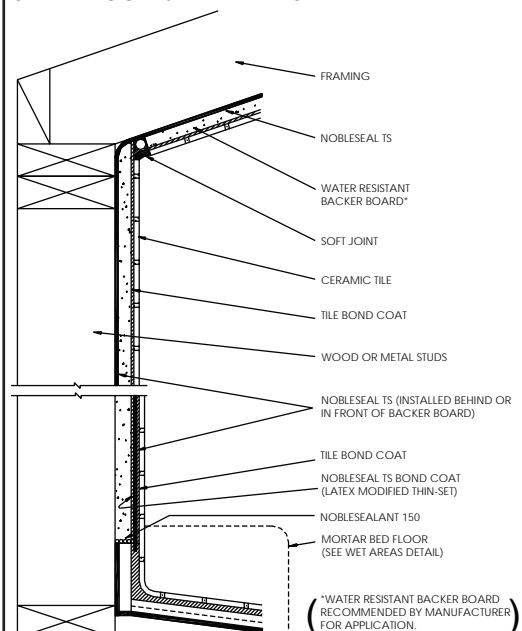
PROPERTY	TEST METHOD	UNITS	NOBLESEAL TS
System Performance	ASTM C 627	cycles	1-14 "Extra Heavy Service"
Hardness	ASTM D 2240	shore A	82
Moisture Vapor Transmission	ASTM E 96	perms/procedure	0.05
Tensile Strength	ASTM D 412 (Die C)	psi	1600
Elongation	ASTM D 412 (Die C)	%	44
Tear Strength	ASTM D 412 (Die C)	psi	400
Shear Strength	ANSI A118.10-2008	psi	passed
7 day / 4 week / 12 week			
Shear Strength - Water Immersion	ANSI A118.10-2008	psi	passed
7 day / 100 day			
Fungus & Microorganism Resistance	ANSI A118.10-2008	% change wt. elong.	no growth
Seam Strength	ANSI A118.10-2008	psi	passed
Waterproofness	ANSI A118.10-2008	perms	passed
Crack Isolation	ANSI A118.12	jig test	"High Performance"

## DETAILS (not to scale)

### SHOWER RECEPTOR WATERPROOFING - THIN-BED, SHOWER PAN CROSS SECTION:



### STEAM ROOM & WET AREAS:



Form #NS TS PD 04/09  
Supersedes TS PD 04/07



P.O. Box 350 • Grand Haven, MI 49417-0350 • Phone: 800-878-5788 • 231-799-8000 • Fax: 231-799-8850 • [www.noblecompany.com](http://www.noblecompany.com)  
® Registered Trademark of Noble Company, Grand Haven, MI. © 2009 Noble Company, Grand Haven, MI.